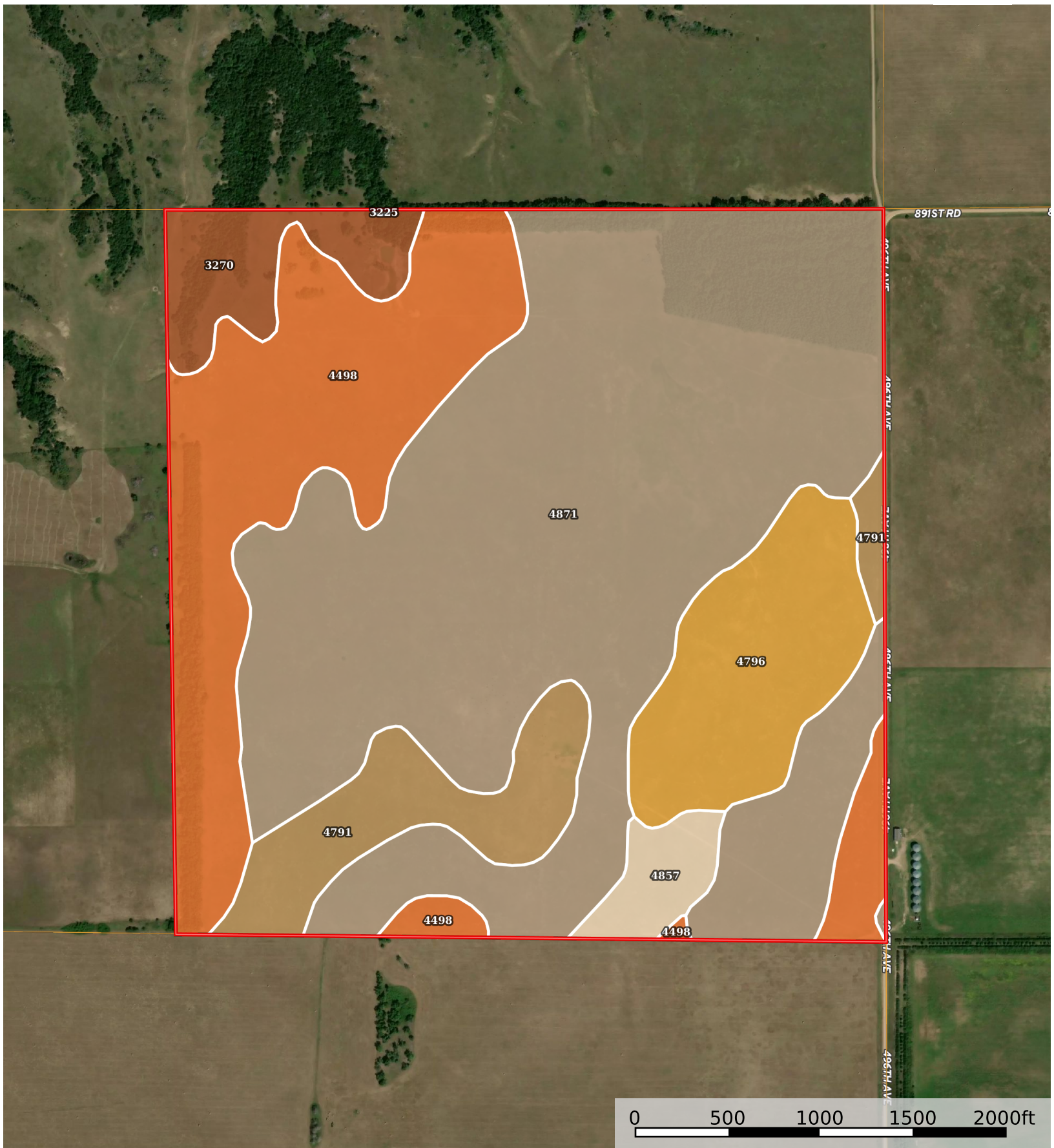


360 +/- Acres, Holt County, Nebraska  
Nebraska, AC +/-



 Boundary

Boundary 348.72 ac

SOIL CODE	SOIL DESCRIPTION	ACRES	%	CPI	NCCPI	CAP
4871	Valentine-Dunday loamy fine sands, 0 to 3 percent slopes	194.9 1	55.9	0	34	4e
4498	Dunday loamy sand, 0 to 3 percent slopes	72.42	20.77	0	36	4e
4796	Valentine fine sand, 9 to 25 percent slopes	32.65	9.36	14	23	6e
4791	Valentine fine sand, 3 to 9 percent slopes	25.66	7.36	0	22	6e
3270	Oneill-Meadin fine sandy loams, 11 to 30 percent slopes	15.46	4.43	0	25	6e
4857	Valentine-Dunday loamy fine sands, moist, 3-9 percent slopes	7.56	2.17	0	34	6e
3225	Labu-Sansarc silty clays, 9 to 35 percent slopes	0.06	0.02	33	26	6e
TOTALS		348.7 2(*)	100%	1.32	32.1	4.47

(\*) Total acres may differ in the second decimal compared to the sum of each acreage soil. This is due to a round error because we only show the acres of each soil with two decimal.

### Capability Legend

Increased Limitations and Hazards

Decreased Adaptability and Freedom of Choice Users

Land, Capability

	1	2	3	4	5	6	7	8
'Wild Life'	•	•	•	•	•	•	•	•
Forestry	•	•	•	•	•	•	•	
Limited	•	•	•	•	•	•	•	
Moderate	•	•	•	•	•	•		
Intense	•	•	•	•	•			
Limited	•	•	•	•				
Moderate	•	•	•					
Intense	•	•						
Very Intense	•							

### Grazing Cultivation

(c) climatic limitations (e) susceptibility to erosion

(s) soil limitations within the rooting zone (w) excess of water